

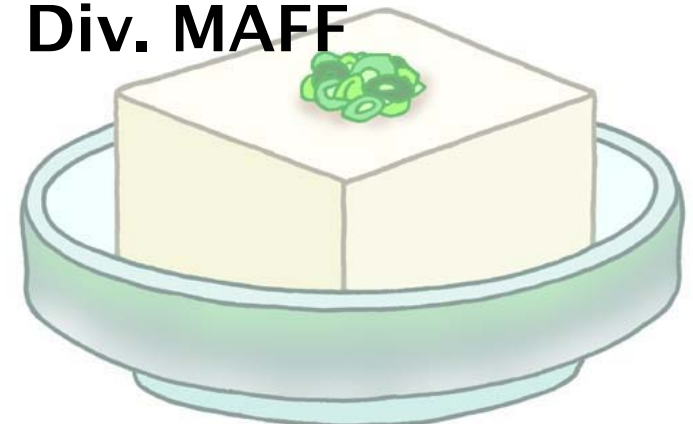
Supply/Demand Overview for 2008/09

(for Oils, Soybean and Soya Meal in Japan)

Food Industry Promotion Div. MAFF

Chie Shindo

**Nov 19,
2009**



Japanese Supply / Demand for Vegetable Oils

(unit: 1,000MT)

	2005	2006	2007	2008	2009F	2009 ^(c) (Jan/Sep)
Demand	2,405	2,404	2,409	2,353	2,360	
Domestic Demand	2,388	2,390	2,399	2,345	2,350	
edible oils ^(a)	1,912	1,892	1,871	1,797	1,782	
tropical oils ^(b)	476	498	528	548	568	
Export	17	14	10	8	10	12 (178.0)
Supply	2,518	2,528	2,516	2,505	2,517	
Opening Stocks	129	122	125	107	154	80 ^(d) (104.2)
Production	1,714	1,763	1,730	1,703	1,660	1,171 (92.3)
soybean oil	575	576	576	542	520	346 (84.5)
rapeseed oil	932	972	942	951	930	679 (97.3)
other oils	207	215	212	211	210	146 (90.4)
Import	675	643	661	695	703	556 (91.6)
edible oils ^(a)	199	145	133	147	135	77 (73.8)
tropical oils ^(b)	476	498	528	548	568	478 (95.3)
Ending Stocks	114	125	107	154	157	68 ^(d) (73.1)

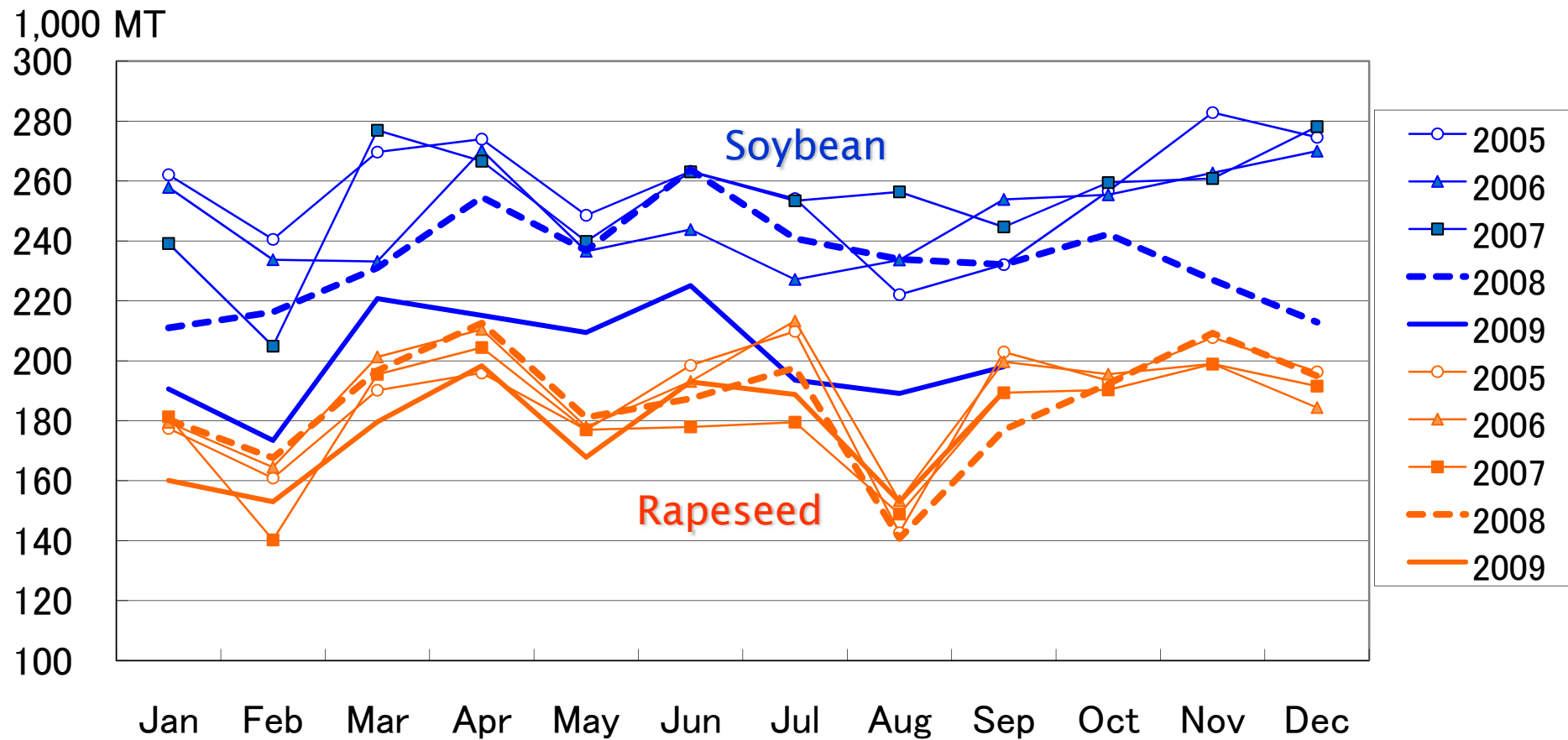
(a) edible oils : soybean oil, rapeseed oil, mustard oil, rice bran oil, cottonseed oil,
safflower oil, sesame oil, corn oil, groundnut oil and sunflowerseed oil

(b) tropical oils : coconut(copra) oil, palm kernel oil and palm oil

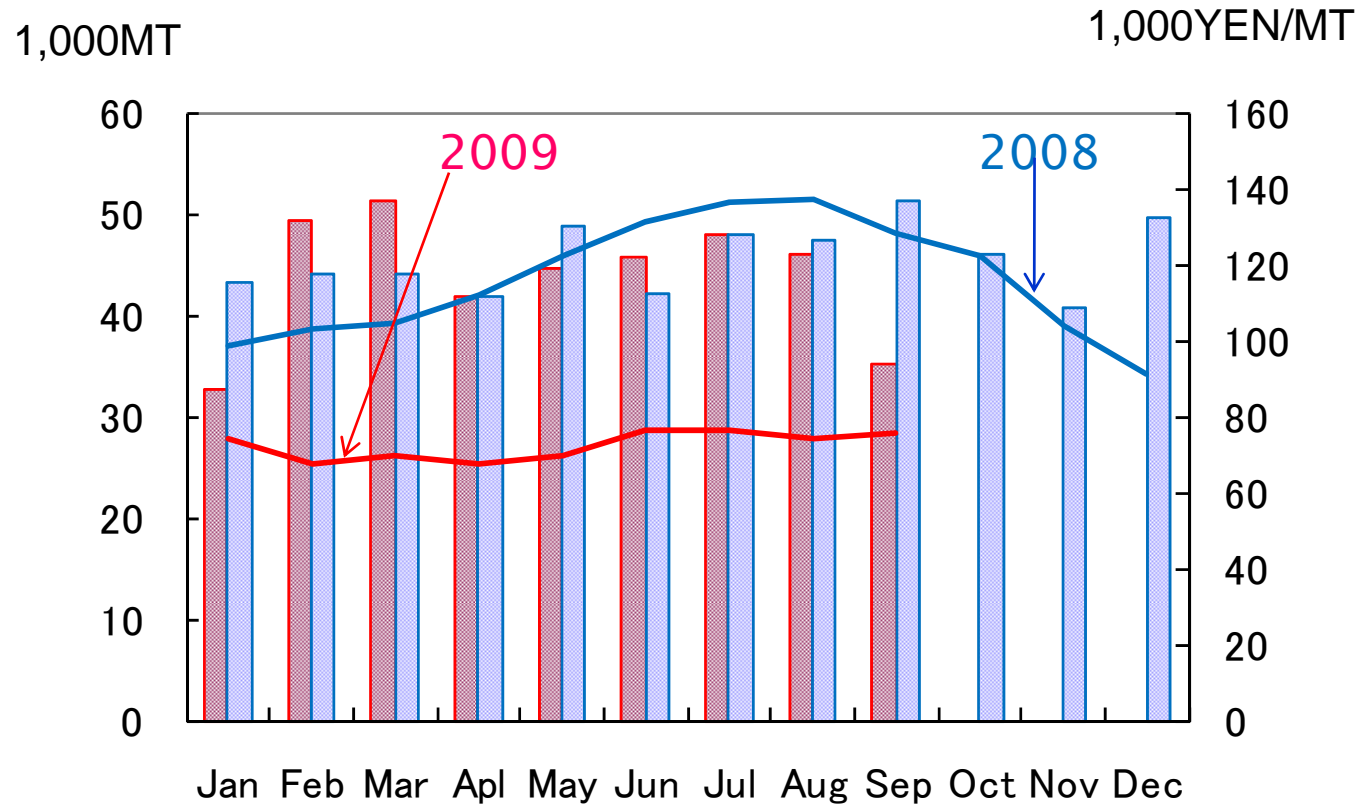
(c) () : ratios to the same period in the previous year(%)

(d) stocks of crushers

Japanese Crashings of Soybean and Rapeseed (2005-2009)



Palm Oil Import



Quantity: Bar Graph, Price: Line Graph

Japanese Supply / Demand for Soybean

(unit: 1,000MT)

	2005	2006	2007	2008	2009F	2009 ^(a) (Jan/Sep)
Demand	4,257	4,149	4,226	3,953	3,905	
Crushing	3,080	2,978	3,044	2,802	2,757	1,815 (85.6)
for Food	1,052	1,046	1,045	1,037	1,034	
for Feed	125	125	125	114	114	
Export	0	0	12	0	0	0 (220.0)
Supply	4,260	4,186	4,307	3,864	3,905	
Crop	163	225	229	227	262	
Import	4,181	4,042	4,161	3,711	3,720	2,627 (89.3)
USA	3,126	3,225	3,325	2,729		1,829 (87.6)
Canada	305	282	309	325		286 (109.7)
China	184	156	137	86		41 (50.3)
Brazil	563	378	367	568		470 (92.4)
Paraguay	0	1	0	1		1 (60.4)
Others	3	1	21	2		0 (22.6)
Loss	▲ 84	▲ 81	▲ 83	▲ 74	▲ 77	
Ending Stocks	227	222	250	179		256 ^(b) (111.7)

(a) () : ratios to the same period in the previous year(%)

(b) stocks of crushers

Japanese Supply / Demand for Soya Meal

(unit : 1,000MT)

	2005	2006	2007	2008	2009F	2009 ^(a) (Jan/Sep)
Demand	4,006	3,879	4,004	3,805	3,800	
for Feed	3,409	3,401	3,465	3,306	3,300	
for Others	597	478	539	499	500	
Export	0	0	0	0	0	0 (-)
Supply	4,109	4,008	4,121	3,936	3,921	
Opening Stocks	124	103	129	117	131	131 ^(b) (112.0)
Production	2,355	2,258	2,286	2,137	2,100	1,377 (85.1)
Import	1,630	1,647	1,706	1,682	1,690	1,458 (108.6)
Ending Stocks	103	129	117	131	121	68 ^(b) (73.1)

(a) () : ratios to the same period in the previous year (%)

(b) stocks of crushers



Thank you